

LRFP Meeting #5
February 15, 2022

BLRB architects



Meeting Agenda

MEETING #5 – EXECUTIVE SUMMARY

1. INTRODUCTIONS

- Facilitation Team
- Attendees

5. NEXT STEPS

6. FINAL THOUGHTS



2. VISION, GOALS, AND OBJECTIVES

3. LRFP EXECUTIVE SUMMARY

- ODE LRFP Requirements & Compliance

4. LRFP COMMITTEE ROLES

Vision, Goals, and Objectives

- Explore grant funding to supplement capital bond funds (OSCIM, ETO, others)
- Provide a safe and secure facility for students, staff and community
- Deliver a flexible and adaptable school that optimizes learning and teaching, meeting the long-term educational needs of Black Butte students of all ages
- Extend the useful life of Black Butte School while preserving its historic quality and character
- Optimize interior environmental health and resource conservation through the integration of sustainable, maintainable materials and energy-efficient systems
- Create indoor and outdoor group or project-based environmental learning opportunities



LRFP Committee Roles

LRFP Committee Roles and Responsibilities Moving Forward:

- Be respectful of other's ideas, opinions, and questions.
- Be engaged and actively participate.
- Become ambassadors for the Long-Range Plan.
- Keep the needs of the students first.
- Remember we are an advisory group.
- Final decisions on bond amounts and prioritization are made by the BBSD School Board.

LRFP Executive Summary

LRFP Executive Summary

LRFP Requirements (OAR 581-027-0040)

1. Population projections by school age for the next 10 years using U.S. Census or Census partner data
2. Collaboration with local government planning agencies (city and/or county) that results in:
 - a. Identification of suitable school sites if needed; and
 - b. Site acquisition schedules and programs.
3. Evidence of community involvement in:
 - a. Determining educational vision of local community;
 - b. Reviewing the costs of identified improvements;
 - c. Prioritizing the identified improvements; and
 - d. Determining potential sources of funds for the improvements.
4. Identification of buildings on historic preservation lists including the National Historic Register, Oregon State Historic Preservation Office, and local historic building lists.

LRFP Executive Summary

LRFP Requirements (OAR 581-027-0040)

5. Analysis of district's current facilities' needs to meet district-adopted educational adequacy standards;
 - a. Identification of standards adopted by district that are used to determine educational adequacy for district;
 - b. Identification of ability of current facility capacity to meet district-adopted educational adequacy standards;
 - c. If current facilities are unable to meet district-adopted educational adequacy standards district will then:
 - i. Identify deficiencies in current facilities;
 - ii. Identify changes needed to bring current facilities up to district-adopted educational adequacy standards; and
 - iii. Identify potential alternatives to new construction or major renovations of current facilities to meet district-adopted educational adequacy standards

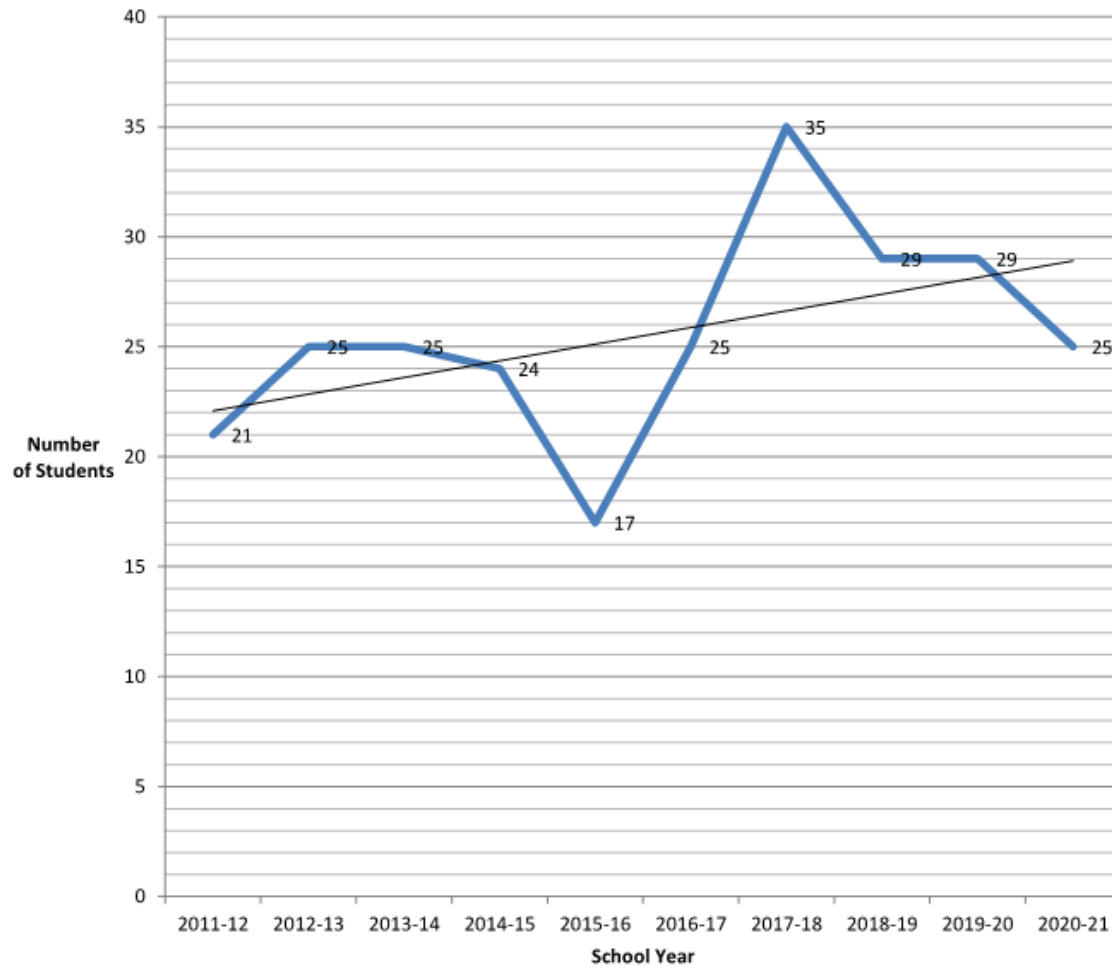
LRFP Executive Summary

OAR 581-027-0040 (1) – Population Projection Findings

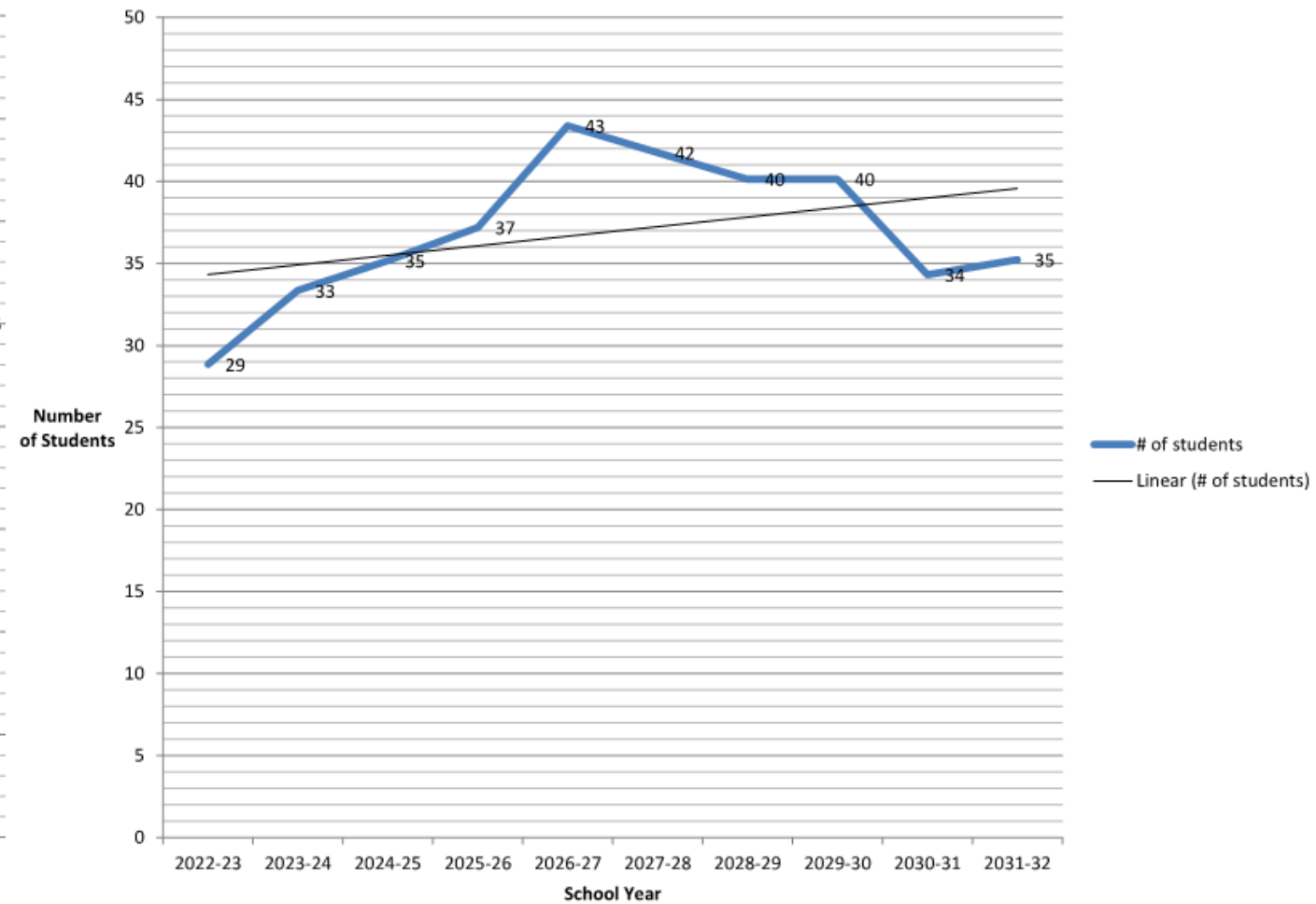
1. Population of Jefferson County is projected to grow from nearly 23,447 in 2018 to 26,751 by 2032 according to the Coordinated Population Forecast authored by the Population Research Center.
2. The growth rate is projected to increase in Outside UGBs by 0.8% between 2018 and 2032.
3. On average, enrollment has increased 2% annually when aggregated over 10 years.
4. The Cohort Survival Method projects an increase of approximately 2% over the next 10 years.
5. Capacity needs are not a contributing factor in a 10 Year Long Range Facility Plan.
6. The Committee reviewed this data during LRFP Meeting #2.

LRFP Executive Summary

Black Butte School Student Population 2011-Present



Black Butte School Student Population 2022-2032



LRFP Executive Summary

OAR 581-027-0040 (2a) – Collaboration with Local Government Identification of Suitable Sites Findings

1. Enrollment projections did not validate a need for any additional schools.
2. Since enrollment projections did not validate a need for additional schools, there is no need for identification of suitable sites

LRFP Executive Summary

OAR 581-027-0040 (2b) – Collaboration with Local Government Site Acquisition Schedules and Programs

1. Enrollment projections did not validate a need for any additional schools.
2. Since enrollment projections did not validate a need for additional schools, there is no need for site acquisition schedules and programs.

LRFP Executive Summary



LRFP Executive Summary

OAR 581-027-0040 (3a) – Evidence of Community Involvement

Determining educational vision of local community

1. Facilitators met with staff and teachers at Black Butte School to review the educational adequacy and understand how they adapt to the educational vision for Black Butte School District.
2. The Educational Adequacy Matrix that was developed to assess the educational vision of the schools is comprehensive in nature and helped to identify gaps.

LRFP Executive Summary

OAR 581-027-0040 (3b) – Evidence of Community Involvement Reviewing the Costs of Identified Improvements

1. The LRFP Committee reviewed budgets from the ODE Facility Assessments in LRFP Meeting #2.
2. The cost to repair each facility is significantly less than the cost to replace the facilities. The Facility Assessment identified a districtwide replacement budget of \$4.21 million and a repair cost of \$1.05 million.
3. The Facility Condition Index ranged from 9.7% at the Summer Lane Residence to 35.6% at Black Butte School.
4. The Committee reviewed the cost for big picture ideas after a prioritization exercise during LRFP Meeting #4.

LRFP Executive Summary

OAR 581-027-0040 (3c) – Evidence of Community Involvement Prioritizing the Identified Improvements

1. The LRFP Committee prioritized 26 items under 4 major categories in LRFP Meeting #4.
2. The 4 major categories included Safety and Security, Operations and Instructional Improvements, Energy Conservation Improvements, and Asset Preservation.

LRFP Executive Summary

	Description of System	Quantity	Unit Budget	Total	Priority	Priority 01	Priority 02	Priority 03
	SAFETY AND SECURITY							
1	Provide secure vestibule and ADA doors	200	\$300	\$60,000	1 \$	60,000	\$ -	\$ -
2	Remove all asbestos flooring and replace	3500	\$15	\$52,500	1 \$	52,500	\$ -	\$ -
3	Provide access controls and FOBs	1	\$6,500	\$6,500	1 \$	6,500	\$ -	\$ -
4	Provide generator for disaster resiliency	1	\$35,000	\$35,000	2 \$	-	\$ 35,000	\$ -
5	Provide exterior site lighting	1	\$5,100	\$5,100	3 \$	-	\$ -	\$ 5,100
	OPERATIONS & INSTRUCTIONAL IMPROVEMENTS							
1	Add third flexible and functional classroom	750	\$420	\$315,000	1 \$	315,000	\$ -	\$ -
2	Provide additional private offices	2	\$63,000	\$126,000	2 \$	-	\$ 126,000	\$ -
3	Provide covered outdoor learning/play structure	1200	\$200	\$240,000	1 \$	240,000	\$ -	\$ -
4	Add restroom to bus barn	60	\$420	\$25,200	1 \$	25,200	\$ -	\$ -
5	Add office to bus barn	160	\$420	\$67,200	3 \$	-	\$ -	\$ 67,200
6	Add staff restroom at school	60	\$420	\$25,200	1 \$	25,200	\$ -	\$ -
7	Add Music Storage	300	\$420	\$126,000	3 \$	-	\$ -	\$ 126,000
8	Add acoustical wall between MPR and classroom	32	\$300	\$9,600	2 \$	-	\$ 9,600	\$ -
9	Update existing storage to include storage/student display	100	\$250	\$25,000	1 \$	25,000	\$ -	\$ -
10	Redesign center room between classrooms to be mud room	115	\$200	\$23,000	1 \$	23,000	\$ -	\$ -

LRFP Executive Summary

ENERGY CONSERVATION IMPROVEMENTS								
1	Replace all lights with LED fixtures	3500	\$17	\$59,500	1	\$ 59,500	\$ -	\$ -
2	Replace lower windows with operable windows (Classroom 1 and MPR)	195	\$85	\$16,575	1	\$ 16,575	\$ -	\$ -
3	Add operable windows at Classroom 2	145	\$90	\$13,050	1	\$ 13,050	\$ -	\$ -
4	Install Ceiling Fans	7	\$1,500	\$10,500	2	\$ -	\$ 10,500	\$ -
5	Install Solar Panels			\$0	3	\$ -	\$ -	\$ -
6	Install Rain Collection/Harvesting System			\$0	3	\$ -	\$ -	\$ -
7	Replace/ Upgrade HVAC System	3500	\$10	\$35,000	1	\$ 35,000	\$ -	\$ -
ASSET PRESERVATION (MAINTENANCE)								
1	Reroof Building (Abatement included)	5000	\$35	\$175,000	1	\$ 175,000	\$ -	\$ -
2	Pave Parking Lot	4500	\$11	\$49,500	3	\$ -	\$ -	\$ 49,500
3	Pave playground	5000	\$6	\$30,000	3	\$ -	\$ -	\$ 30,000
4	Pave pathways around building	1400	\$6	\$8,400	3	\$ -	\$ -	\$ 8,400
	Subtotal			\$1,538,825		\$ 1,071,525	\$ 181,100	\$ 286,200
	Budgeted Development Costs		38%	\$584,754		\$ 407,180	\$ 68,818	\$ 108,756
	Escalation		16%	\$339,773		\$ 236,593	\$ 39,987	\$ 63,193
	Budget TOTAL			\$2,463,351		\$ 1,715,297	\$ 289,905	\$ 458,149

LRFP Executive Summary

OAR 581-027-0040 (4) – Identification of Historic Buildings Findings

Identification of buildings on historic preservation lists including the National Historic Register, Oregon State Historic Preservation Office, and local historic building lists

1. There are currently no buildings on any historic registry.
2. Buildings that are over 50 years old can be considered for registration.
3. Because of its age, Black Butte School is eligible to be registered
 - a) Black Butte School was built in 1951
4. BBSD has chosen not to register the buildings in the historic registry, but could adopt a formal process to consider registering the school in the historic registry.
5. Although not registered, it is recommended that any additions to Black Butte School adhere to the Secretary of Interior's Standards for Rehabilitation.

LRFP Executive Summary

OAR 581-027-0040 (5a) – Educational Adequacy Standards

Identification of standards adopted by district that are used to determine educational adequacy for the district

1. The Educational Adequacy Matrix that was developed to assess the educational vision of the school is comprehensive in nature and helped to identify gaps.
2. BLRB met with administrators and teachers to identify needs utilizing 8 major categories and 43 subcategory data points to gather information.
 - a. Capacity – Core Spaces, Capacity – Specialty Spaces, Technology, Supervision and Security, Instructional Aides, Physical Characteristics, Learning Environment, Relationship of Spaces
3. The Educational Adequacy Matrix coordinated with the district is more qualitative and quantitative than what is asked for by ODE in order to gather a more complete picture.

LRFP Executive Summary

OAR 581-027-0040 (5b) – Educational Adequacy Standards

Identification of ability of current facility capacity to meet district adopted educational adequacy standards

1. An enrollment and capacity analysis was completed for Black Butte School in preparation for the educational adequacy meeting.
2. Black Butte School is at or under capacity when utilizing optimal class sizes and evaluating program.
3. Two of the categories in the Educational Adequacy Matrix specifically deal with Capacity and size of each space.
4. The Long-Range Facility Plan has not identified a need to add classrooms for capacity.
5. However, the LRFP has identified a need for a more flexible classroom for agile lesson planning and to give more opportunities for small group and large group activities and student services in support of teaching multiple grade levels.

LRFP Executive Summary

OAR 581-027-0040 (5ci) – Educational Adequacy Standards

Identify deficiencies in current facilities

1. Educational Adequacy deficiencies have been identified at Black Butte School with a score of 6.1 out of 16.
2. Many of the deficiencies can be attributed to the age of the facility.
3. There is a lack of teaching space conducive to teaching multiple grade levels.
4. Office space with appropriate visual and acoustical privacy is lacking.
5. There is no dedicated space or storage for Arts, Music, and Science.
6. Special Needs Education space and storage is lacking.

LRFP Executive Summary

OAR 581-027-0040 (5cii) – Educational Adequacy Standards

Identify changes needed to bring current facilities up to meet District adopted Educational Adequacy Standards

1. Provide Third Classroom
2. Update HVAC
3. Safety and Security Upgrades
4. Roof Replacement
5. Window Replacement
6. Provide Outdoor Covered Learning Area
7. Provide Office Space
8. Update Restrooms
9. Provide Additional Student Storage

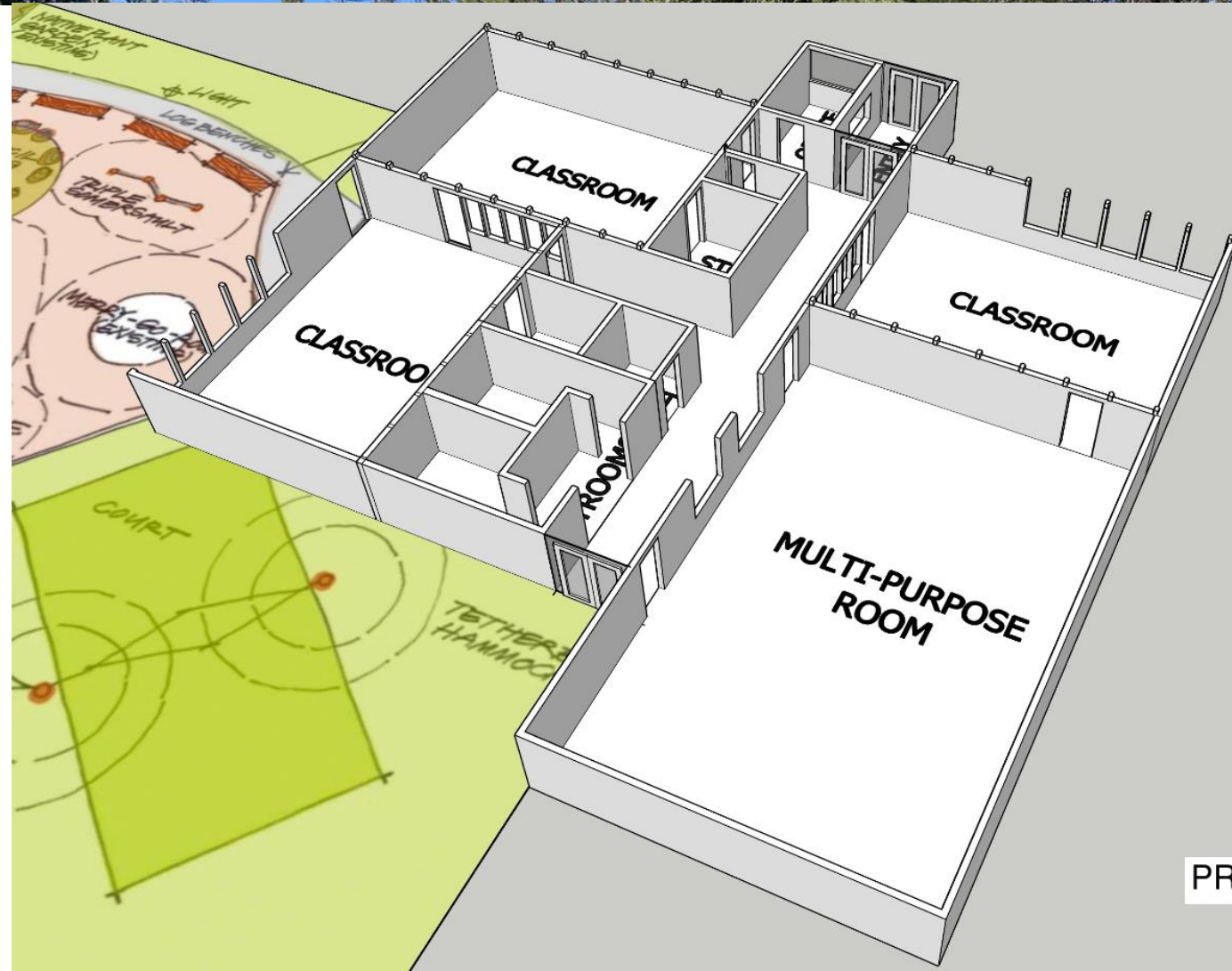
LRFP Executive Summary

OAR 581-027-0040

(5ciii) –

Educational Adequacy Standards

Identify potential alternatives to new construction or major renovations of current facilities to meet district-adopted educational adequacy standards.



PROPOSED ADDITION

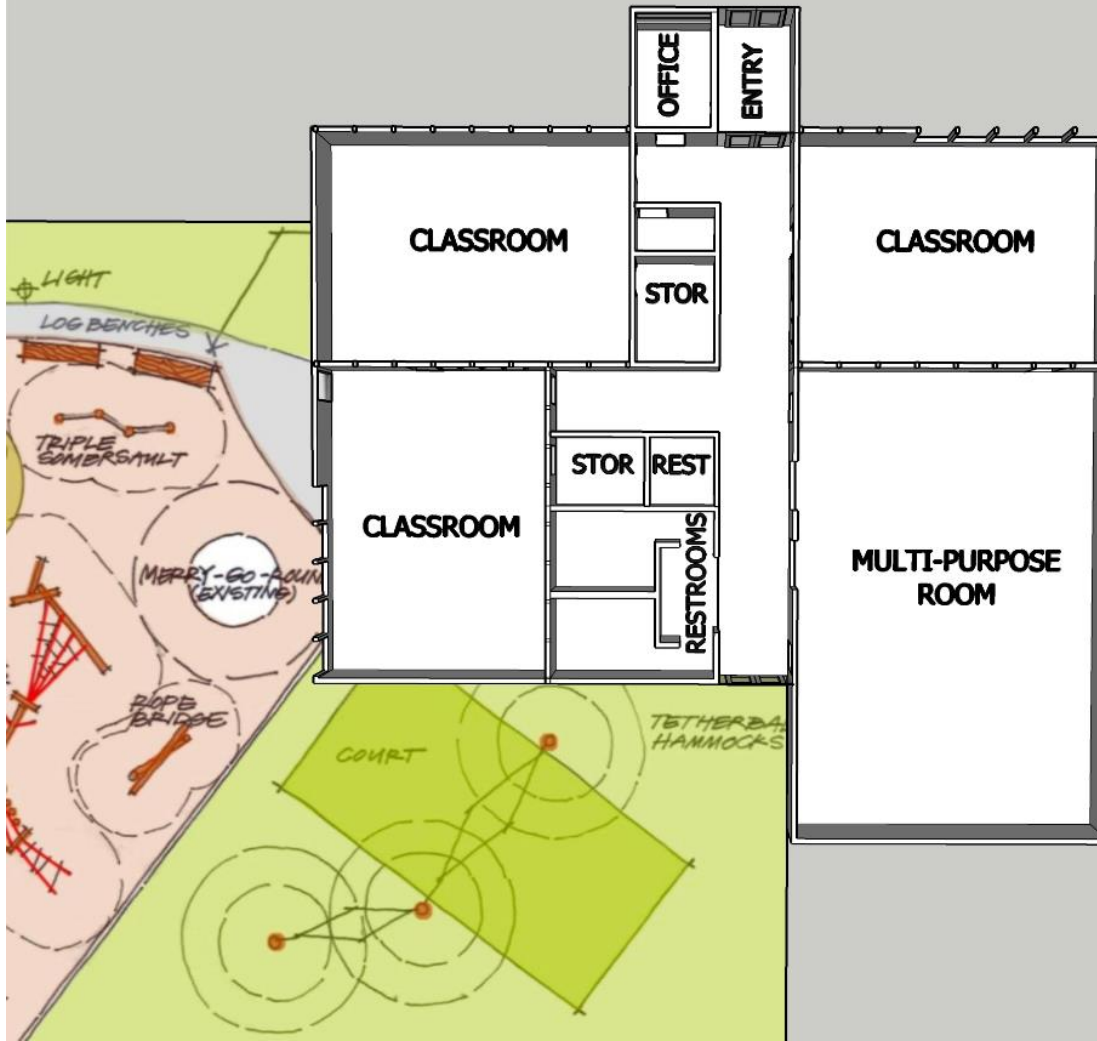
LRFP Executive Summary

OAR 581-027-0040

(5ciii) –

Educational Adequacy Standards

Identify potential alternatives to new construction or major renovations of current facilities to meet district-adopted educational adequacy standards.



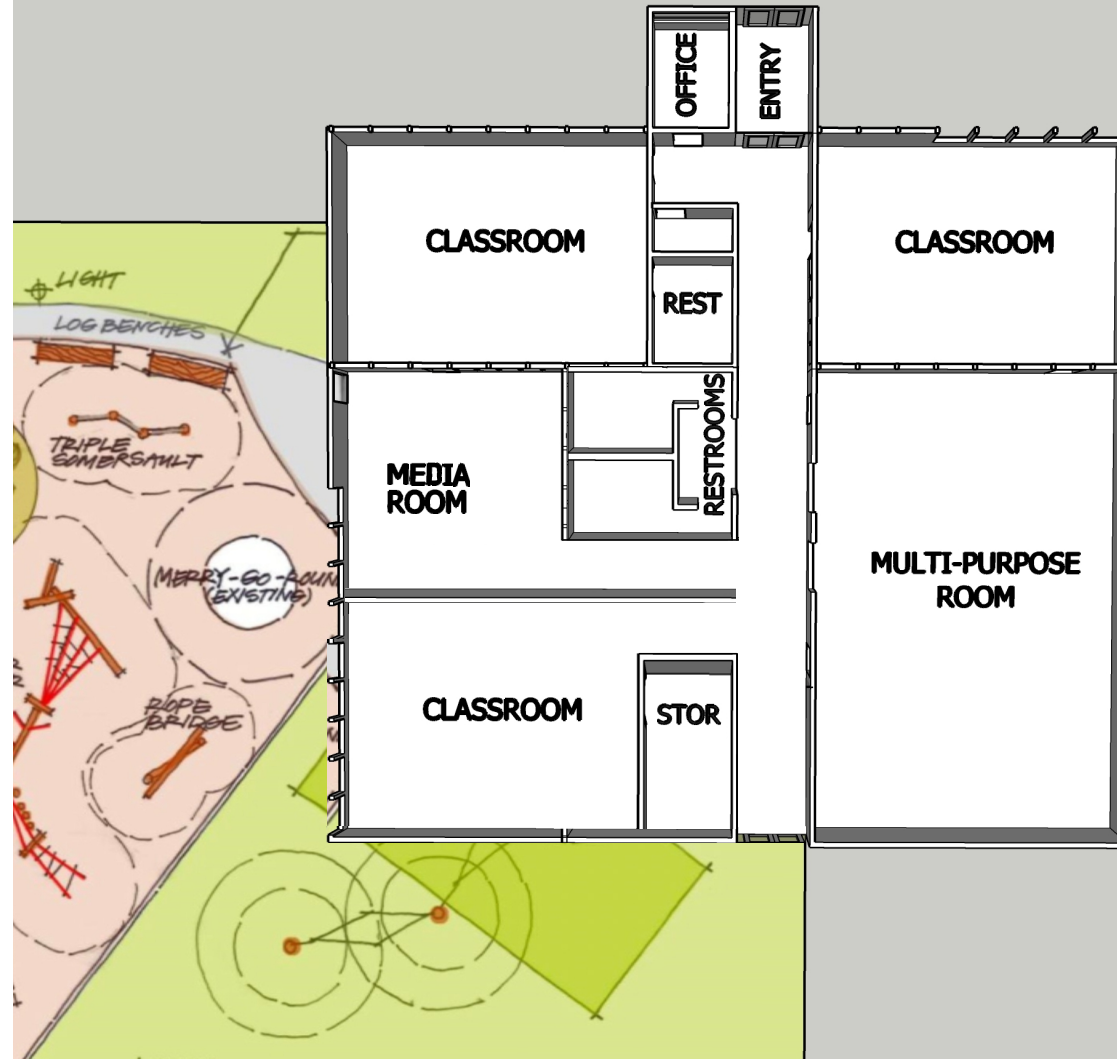
LRF Executive Summary

OAR 581-027-0040

(5ciii) –

Educational Adequacy Standards

Identify potential alternatives to new construction or major renovations of current facilities to meet district-adopted educational adequacy standards.



NEXT STEPS



- Draft LRFP Report
- Submit Report to Black Butte School District
- Submit Report to ODE

FINAL THOUGHTS



THANK YOU FOR ALL OF YOUR
TIME, CONTRIBUTIONS, AND
DEDICATION!!!